

C. IZVIRI

C. SPRINGS

C.0. POJASNILA K PREGLEDNICAM

V poglavju o monitoringu izvirov (C) so poleg Pojasnil k preglednicam (C.0.) s predstavitvijo merjenih parametrov, podani še tri podpoglavja s preglednicami.

V letu 2003 so v programu monitoringa izvirov delovale postaje na izvirih Divje jezero, Globočec in Kamniška Bistrica. V preglednicah podajamo dnevne vrednosti vodostajev (C.1.), temperatur (C.2.) in specifične električne prevodnosti (C.3.) ter njihove diagrame.

Razlage pojmov in okrajšav v preglednicah:

- **Št.** – tekoča številka izvira;
- **Tip** – opremljenost postaje (**P** – podatkovni zapisovalnik);
- **Postaja** – ime postaje za izvir oz. lokacija;
- **Izvir** – ime izvira;
- **Kota »0«** – nadmorska višina nulte točke, od koder se meri višina vodnega stolpca oz. vodostaj;
- **X in Y** – Gauss-Kruegerjeve koordinate položaja postaje na topografski karti merila 1:25000;
- **Začetek opazovanj** – začetno leto merjenj podatkov;
- **Stran** – stran, na kateri so za postajo izvira navedeni podatki o vodostajih (**H**), temperaturi (**T**) in specifični električni prevodnosti (**EP**);
- ---- – ni podatka;
- **Hnk** – najnižji mesečni oz. letni vodostaj;
- **Hs** – srednje mesečni oz. letni vodostaj;
- **Hvk** – najvišji mesečni oz. letni vodostaj;
- **Tnk** – najnižja mesečna oz. letna temperatura;
- **Ts** – srednja mesečna oz. letna temperatura;
- **Tvk** – najvišja mesečna oz. letna temperatura;
- **EPnk** – najnižja mesečna oz. letna vrednost specifične električne prevodnosti;
- **EPs** – srednje mesečna oz. letna vrednost specifične električne prevodnosti;
- **EPvk** – najvišja mesečna oz. letna vrednost specifične električne prevodnosti.

Seznam postaj za izvire (I. 2003)

Št.	Tip	Postaja	Izvir	Kota "0"	Y	X	Pričetek opazovanj	Stran		
								H	T	EP
1	P	DIVJE JEZERO	DIVJE JEZERO	327.168	5 425 080	5 093 580	1999	207	209	
2	P	GLOBOČEC	GLOBOČEC	----	5 079 150	5 486 380	2001	207		
3	P	IZVIR	KAMNIŠKA BISTRICA	----	5 131 580	5 468 815	2001	208	209	210

C.0. EXPLANATION TO THE TABLES

In the chapter on the monitoring of springs (C) three sections containing tables were added to the Explanation to the Tables (C.0.) including a presentation of measured parameters.

Three gauging stations on locations Divje jezero, Globočec and Kamniška Bistrica were in operation in the year 2003. Data on daily water levels are listed in C.1., daily values of temperatures in C.2., and values of specific electrical conductivity are listed in the table in C.3. along with graphs.

Explanation of terms and abbreviations used in the tables:

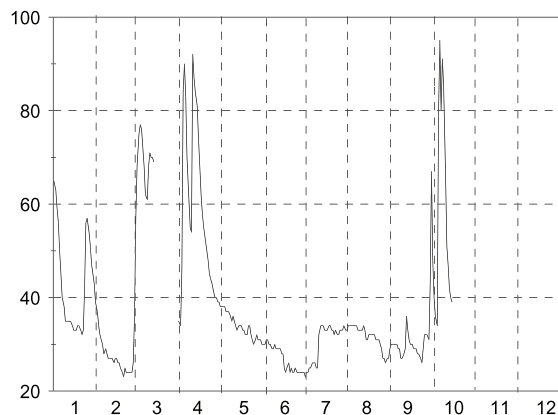
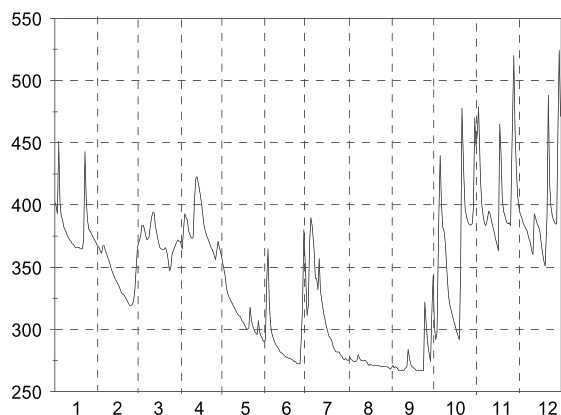
- **Št.** (No.) — current number of the spring;
- **Tip** (Type) — equipment at the station (**P** – data logger);
- **Postaja** (Station) — name of the station for a spring or location;
- **Izvir** — the name of the spring;
- **Kota** »»0«« (datum point) — altitude of point zero used as a reference for measuring water level;
- **X in Y** — Gauss-Krueger co-ordinates of the station's position on the topographical map, scale 1:25000;
- **Začetek opazovanj** (Beginning of observations) — the first year of measuring data;
- **Stran** (Page) — the page listing the data on water levels (**H**), temperature (**T**) and specific electrical conductivity (**EP**);
 - ---- – no data;
 - **Hnk** — lowest monthly and annual water levels;
 - **Hs** — mean monthly and annual water levels;
 - **Hvk** — highest monthly and annual water levels;
 - **Tnk** — lowest monthly and annual temperatures;
 - **Ts** — mean monthly and annual temperatures;
 - **Tvk** — highest monthly and annual temperatures;
 - **Epnk** — lowest monthly and annual values of the specific electrical conductivity;
 - **Eps** — mean monthly and annual values of the specific electrical conductivity;
 - **Epvk** — highest monthly and annual values of the specific electrical conductivity.

List of gauging stations for springs (2003)

Št.	Tip	Postaja	Izvir	Kota "0"	Y	X	Pričetek opazovanj	Stran		
								H	T	EP
1	P	DIVJE JEZERO	DIVJE JEZERO	327.168	5 425 080	5 093 580	1999	207	209	
2	P	GLOBOČEC	GLOBOČEC	----	5 079 150	5 486 380	2001	207		
3	P	IZVIR	KAMNIŠKA BISTRICA	----	5 131 580	5 468 815	2001	208	209	210

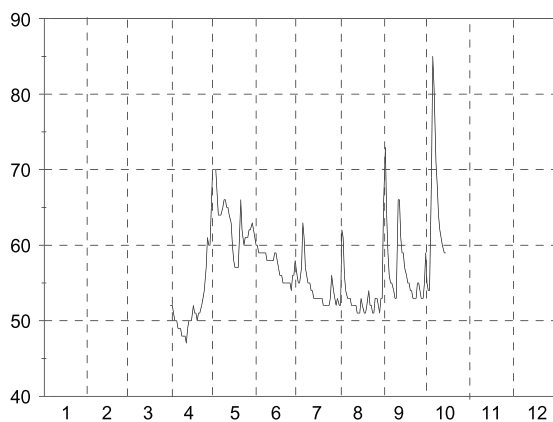
C.1. Dnevni vodostaji z nivogramom (I. 2003)

Št.: 1 DIVJE JEZERO DIVJE JEZERO												Št.: 2 GLOBOČEC GLOBOČEC													
Vodostaj v cm Tip: P Kota"0": 327.168												Vodostaj v cm Tip: P Kota"0": ----													
Dan	1	2	3	4	5	6	7	8	9	10	11	12	Dan	1	2	3	4	5	6	7	8	9	10	11	12
1	402	366	366	371	357	291	311	278	271	303	457	398	1	65	37	57	35	38	30	23	34	30	48		
2	393	363	370	365	349	339	319	276	269	292	479	393	2	63	34	68	34	38	30	24	34	30	40		
3	451	361	375	380	343	365	370	275	270	297	421	389	3	59	32	75	46	38	31	24	34	30	36		
4	402	367	384	393	334	322	390	274	269	394	401	385	4	56	31	77	84	38	31	25	34	30	34		
5	391	367	384	390	329	304	383	274	267	440	392	383	5	50	30	76	90	37	30	25	34	30	79		
6	388	363	381	388	326	297	364	275	267	401	386	381	6	45	28	72	83	37	30	26	34	29	95		
7	382	359	375	379	324	292	341	280	267	382	383	379	7	40	29	68	70	37	29	26	34	29	80		
8	379	356	372	375	321	289	341	277	267	379	387	374	8	38	28	62	61	36	29	26	33	27	91		
9	376	353	374	373	319	287	332	275	267	370	395	370	9	35	27	61	55	35	30	25	33	27	85		
10	374	349	382	374	317	286	357	275	269	343	393	363	10	35	27	68	54	36	29	25	33	28	66		
11	372	346	390	402	315	284	331	275	270	327	388	360	11	35	27	71	92	35	29	32	33	29	51		
12	371	343	394	421	313	282	320	275	284	320	383	393	12	35	27	70	87	34	29	34	34	36	47		
13	369	340	394	423	311	281	313	274	277	316	379	390	13	35	26	70	84	33	29	34	33	33	42		
14	368	338	383	415	310	280	308	272	272	312	374	386	14	34	27	69	81	34	28	34	31	31	40		
15	366	336	375	409	307	279	303	271	270	307	368	382	15	33	27		74	34	28	33	31	30	39		
16	366	334	370	402	306	278	299	272	269	302	363	378	16	33	26		68	34	25	33	32	30			
17	366	331	366	393	304	278	295	271	268	298	465	369	17	33	26		62	33	24	33	32	29			
18	366	329	365	384	302	277	293	271	267	295	443	361	18	34	25		58	33	25	34	32	29			
19	365	328	364	379	300	277	290	271	267	292	406	355	19	34	24		55	32	26	34	32	29			
20	365	326	364	374	301	276	286	271	267	350	395	351	20	33	23		52	32	24	33	32	28			
21	372	324	366	372	318	275	284	271	267	478	390	392	21	32	25		50	34	25	33	31	28			
22	443	322	362	369	308	274	282	271	267	423	386	488	22	33	24		48	34	24	32	31	27			
23	405	320	356	366	303	274	282	270	267	397	385	417	23	42	24		45	32	24	33	31	26			
24	388	319	347	364	300	273	282	270	322	391	386	399	24	56	24		44	31	25	32	30	29			
25	381	320	349	361	298	273	280	270	306	387	383	392	25	57	24		43	30	24	32	29	32			
26	378	323	360	356	296	272	279	270	292	385	442	388	26	54	24		41	31	24	33	27	32			
27	376	332	365	363	307	293	277	270	283	384	520	385	27	51	26		40	32	24	33	27	32			
28	374	349	367	371	298	320	276	270	274	385	460	385	28	47	36		40	31	24	33	26	31			
29	372		370	366	295	380	277	269	314	398	429	461	29	45			39	31	24	34	27	43			
30	370		372	362	293	342	275	268	343	470	408	524	30	43			39	31	24	33	27	67			
31	368		371		290		275	269		447		471	31	39				30		33	29				
Dan	20	25	24	26	31	26	31	15	5	17	16	11	Dan	22	20	1	2	30	26	6	24	18	4		
Hnk	363	318	344	353	288	271	273	263	265	288	358	345	Hnk	25	17	43	22	27	23	20	21	25	34		
Hs	382	342	371	381	313	295	310	273	278	363	408	395	Hs	43	28	69	58	34	27	30	31	31	59		
Hvk	490	370	400	441	360	416	436	282	394	501	551	534	Hvk	72	49	85	98	60	31	37	37	72	102		
Dan	3	1	12	13	1	3	4	7	30	21	2	30	Dan	1	28	4	11	5	2	24	12	30	8		
Hnk		263											Hnk		17								102		
Hs													Hs												
Hvk													Hvk												



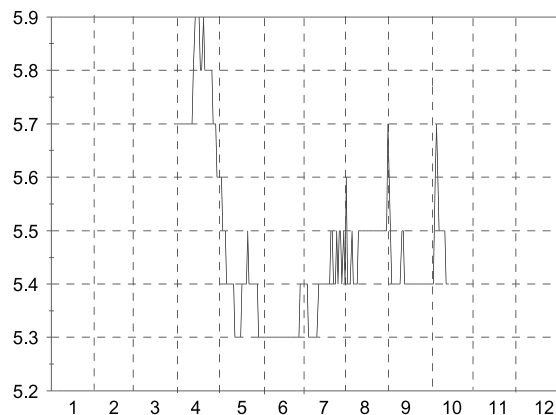
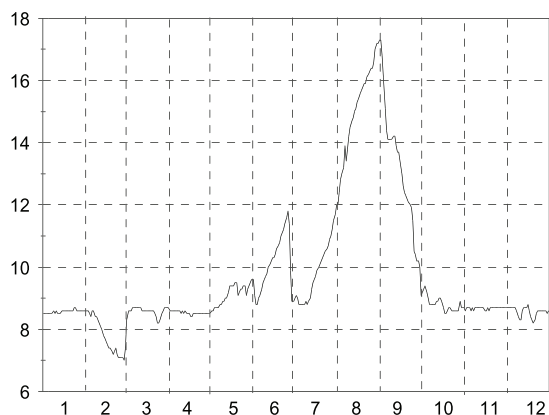
C.1. Dnevni vodostaji z nivogramom (I. 2003)

Št.: 3 IZVIR KAMNIŠKA BISTRICA												
Vodostaj v cm Tip: P Kota"0": ---												
Dan	1	2	3	4	5	6	7	8	9	10	11	12
1				52	70	60	55	62	73	55		
2				52	70	60	55	61	64	54		
3				51	70	59	57	56	59	54		
4				50	67	59	63	54	56	69		
5				50	64	59	61	53	55	85		
6				49	64	59	57	53	55	81		
7				49	64	59	56	53	54	71		
8				49	65	59	55	52	53	68		
9				48	66	58	55	52	53	64		
10				48	66	58	54	52	66	62		
11				48	65	58	54	52	66	61		
12				47	65	58	53	51	61	60		
13				49	64	58	53	51	59	59		
14				50	63	59	53	51	59	59		
15				50	60	59	53	53	57			
16				50	58	58	53	52	56			
17				52	57	57	53	51	55			
18				51	57	56	53	51	55			
19				51	57	56	52	52	54			
20				50	61	55	52	54	54			
21				51	66	55	52	52	53			
22				51	62	55	52	52	53			
23				52	60	55	52	51	53			
24				53	61	55	53	51	55			
25				54	61	55	56	53	55			
26				57	61	54	54	53	54			
27				61	62	56	53	52	53			
28				60	62	56	52	51	53			
29				60	63	58	53	53	55			
30				65	62	56	52	53	59			
31					61		52	65				
Dan				12	19	26	22	25	22	4		
Hnk				47	56	54	51	50	52	53		
Hs				52	63	57	54	53	57	65		
Hvk				70	71	61	64	80	79	87		
Dan				30	3	1	4	31	1	5		
Hnk			47				57					87



C.2. Dnevne vrednosti temperatur s termogramom (I. 2003)

Št.: 1 DIVJE JEZERO DIVJE JEZERO												Št.: 3 IZVIR KAMNIŠKA BISTRICA													
Temperatura v oC Tip: P Kota"0": 327.168												Temperatura v oC Tip: P Kota"0": ----													
Dan	1	2	3	4	5	6	7	8	9	10	11	12	Dan	1	2	3	4	5	6	7	8	9	10	11	12
1	8.5	8.6	7.4	8.7	8.5	9.6	9.0	12.0	17.3	9.2	8.6	8.7	1				5.7	5.6	5.3	5.4	5.6	5.6	5.4		
2	8.5	8.6	8.3	8.6	8.6	9.1	9.1	12.4	16.8	9.3	8.7	8.7	2				5.7	5.6	5.3	5.4	5.4	5.5	5.4		
3	8.5	8.5	8.6	8.6	8.6	8.8	9.0	12.8	16.1	9.4	8.7	8.7	3				5.7	5.6	5.3	5.4	5.4	5.4	5.4		
4	8.5	8.4	8.6	8.6	8.7	8.8	8.8	13.0	15.1	9.2	8.7	8.7	4				5.7	5.5	5.3	5.4	5.4	5.4	5.6		
5	8.5	8.6	8.6	8.6	8.7	9.0	8.8	13.2	14.4	9.0	8.6	8.7	5				5.7	5.5	5.3	5.3	5.5	5.4	5.7		
6	8.5	8.6	8.7	8.6	8.7	9.1	8.8	13.9	14.1	8.8	8.7	8.7	6				5.7	5.5	5.3	5.3	5.4	5.4	5.6		
7	8.5	8.4	8.7	8.6	8.7	9.3	8.8	13.4	14.1	8.8	8.6	8.7	7				5.7	5.4	5.3	5.3	5.4	5.4	5.5		
8	8.6	8.4	8.7	8.6	8.8	9.5	8.8	13.8	14.1	8.8	8.7	8.6	8				5.7	5.4	5.3	5.3	5.4	5.4	5.5		
9	8.5	8.3	8.7	8.6	8.8	9.6	8.9	14.2	14.1	8.8	8.7	8.4	9				5.7	5.4	5.3	5.3	5.4	5.4	5.5		
10	8.6	8.2	8.7	8.5	8.9	9.7	8.8	14.5	14.2	8.8	8.7	8.3	10				5.7	5.4	5.3	5.3	5.5	5.5	5.5		
11	8.5	8.1	8.7	8.6	8.9	9.8	8.9	14.7	14.2	8.9	8.7	8.3	11				5.7	5.4	5.3	5.3	5.5	5.5	5.5		
12	8.5	8.0	8.7	8.5	9.0	10.0	9.0	14.8	13.9	8.9	8.7	8.6	12				5.7	5.4	5.3	5.4	5.5	5.4	5.4		
13	8.5	7.8	8.6	8.6	9.0	10.1	9.3	15.0	13.7	9.0	8.7	8.7	13				5.8	5.3	5.3	5.4	5.5	5.4	5.4		
14	8.6	7.7	8.6	8.5	9.2	10.2	9.5	15.1	13.7	9.0	8.7	8.7	14				5.9	5.3	5.3	5.4	5.5	5.4	5.4		
15	8.6	7.6	8.6	8.5	9.4	10.3	9.6	15.3	13.4	8.9	8.6	8.7	15				5.9	5.3	5.3	5.4	5.5	5.4	5.4		
16	8.6	7.5	8.6	8.5	9.4	10.3	9.7	15.4	13.0	8.7	8.6	8.8	16				5.9	5.3	5.3	5.4	5.5	5.4	5.4		
17	8.6	7.4	8.6	8.4	9.4	10.4	9.9	15.6	12.6	8.5	8.7	8.6	17				5.9	5.3	5.3	5.4	5.5	5.4	5.4		
18	8.6	7.4	8.6	8.4	9.4	10.6	10.0	15.7	12.4	8.5	8.6	8.4	18				5.8	5.4	5.3	5.4	5.5	5.4	5.4		
19	8.6	7.3	8.6	8.5	9.5	10.7	10.1	15.8	12.3	8.6	8.7	8.3	19				5.8	5.4	5.3	5.4	5.5	5.4	5.4		
20	8.6	7.2	8.6	8.5	9.5	10.8	10.2	15.9	12.2	8.7	8.7	8.2	20				5.9	5.4	5.3	5.4	5.5	5.4	5.4		
21	8.6	7.3	8.6	8.5	9.1	11.0	10.3	15.9	12.1	8.7	8.7	8.3	21				5.8	5.4	5.3	5.5	5.5	5.4	5.4		
22	8.6	7.4	8.5	8.5	9.2	11.1	10.4	16.1	12.0	8.6	8.7	8.5	22				5.8	5.5	5.3	5.5	5.5	5.4	5.4		
23	8.7	7.2	8.4	8.5	9.3	11.2	10.5	16.2	11.9	8.6	8.7	8.6	23				5.8	5.4	5.3	5.4	5.5	5.4	5.4		
24	8.7	7.1	8.2	8.5	9.3	11.4	10.6	16.3	11.5	8.6	8.7	8.6	24				5.8	5.4	5.3	5.4	5.5	5.4	5.4		
25	8.6	7.1	8.2	8.5	9.4	11.6	10.7	16.4	10.5	8.6	8.7	8.6	25				5.8	5.4	5.3	5.5	5.5	5.4	5.4		
26	8.6	7.1	8.3	8.5	9.4	11.8	10.9	16.4	10.4	8.6	8.7	8.6	26				5.8	5.4	5.3	5.4	5.5	5.4	5.4		
27	8.6	7.1	8.5	8.5	9.1	11.4	11.0	16.6	10.2	8.6	8.7	8.6	27				5.7	5.4	5.3	5.5	5.5	5.4	5.4		
28	8.6	7.0	8.6	8.5	9.3	9.9	11.2	17.0	10.2	8.9	8.7	8.6	28				5.7	5.4	5.3	5.5	5.5	5.4	5.4		
29	8.6		8.7	8.5	9.4	8.9	11.5	17.2	10.0	8.7	8.7	8.6	29				5.7	5.4	5.4	5.4	5.5	5.4	5.4		
30	8.6		8.7	8.5	9.5	8.9	11.7	17.2	9.1	8.7	8.7	8.5	30				5.6	5.3	5.4	5.5	5.5	5.4	5.4		
31	8.6		8.7		9.6		12.0	17.3		8.7	8.7	8.6	31					5.3			5.4	5.7			
Dan	9	28	1	17	1	2	7	1	30	17	1	11	Dan				30	12	1	1	1	2	1		
Tnk	8.3	6.8	7.0	8.4	8.5	8.6	8.7	11.9	9.0	8.4	8.6	8.2	Tnk				5.4	5.3	5.3	5.3	5.4	5.4	5.4		
Ts	8.6	7.8	8.5	8.5	9.1	10.1	9.9	15.2	13.0	8.8	8.7	8.6	Ts				5.8	5.4	5.3	5.4	5.5	5.4	5.5		
Tvk	9.7	8.7	8.9	9.1	9.8	16.5	12.1	17.5	17.6	10.4	9.0	8.9	Tvk				6.1	5.7	5.6	5.7	6.3	5.7	5.9		
Dan	24	5	9	9	20	27	31	31	1	4	6	7	Dan				13	1	9	3	31	1	4		
Tnk		6.8										17.6	Tnk				5.3				5.5			6.3	



C.3. Dnevne vrednosti specifične električne prevodnosti z diagramom (I. 2003)

Št.: 3 IZVIR KAMNIŠKA BISTRICA													
EP v mikro S/cm			Tip: P			Kota"0": ---							
Dan	1	2	3	4	5	6	7	8	9	10	11	12	
1				168	164	155	154	159	160	163			
2				166	162	155	154	158	160	163			
3				167	160	154	154	158	160	163			
4				168	158	154	153	158	160	164			
5				168	157	153	152	158	160	166			
6				169	155	153	152	159	161	161			
7				170	155	152	153	158	161	161			
8				170	154	152	154	159	161	163			
9				170	154	152	154	159	161	164			
10				170	154	152	155	160	162	164			
11				170	154	153	155	160	162	163			
12				171	154	153	156	160	162	163			
13				175	154	153	156	160	163	164			
14				177	153	153	156	160	162	164			
15				177	153	152	157	159	162				
16				176	153	152	157	159	162				
17				175	154	152	158	160	162				
18				175	154	152	158	160	162				
19				174	154	152	158	160	162				
20				173	154	152	159	159	162				
21				172	157	152	159	159	163				
22				171	158	152	159	160	163				
23				170	157	153	159	161	163				
24				169	156	153	159	161	163				
25				167	156	153	158	161	162				
26				166	156	153	159	160	162				
27				165	155	152	159	160	163				
28				166	155	152	160	161	163				
29				166	154	153	160	161	163				
30				166	155	153	160	160	162				
31					155		160	161					
Dan				9	14	28	9	9	6	2			
EPnk				164	153	144	142	151	154	157			
EPs				170	156	153	157	160	162	163			
EPvk				178	166	155	161	164	165	169			
Dan				13	1	1	31	31	29	5			
EPnk	142			EPs			159			EPvk			178

